

---

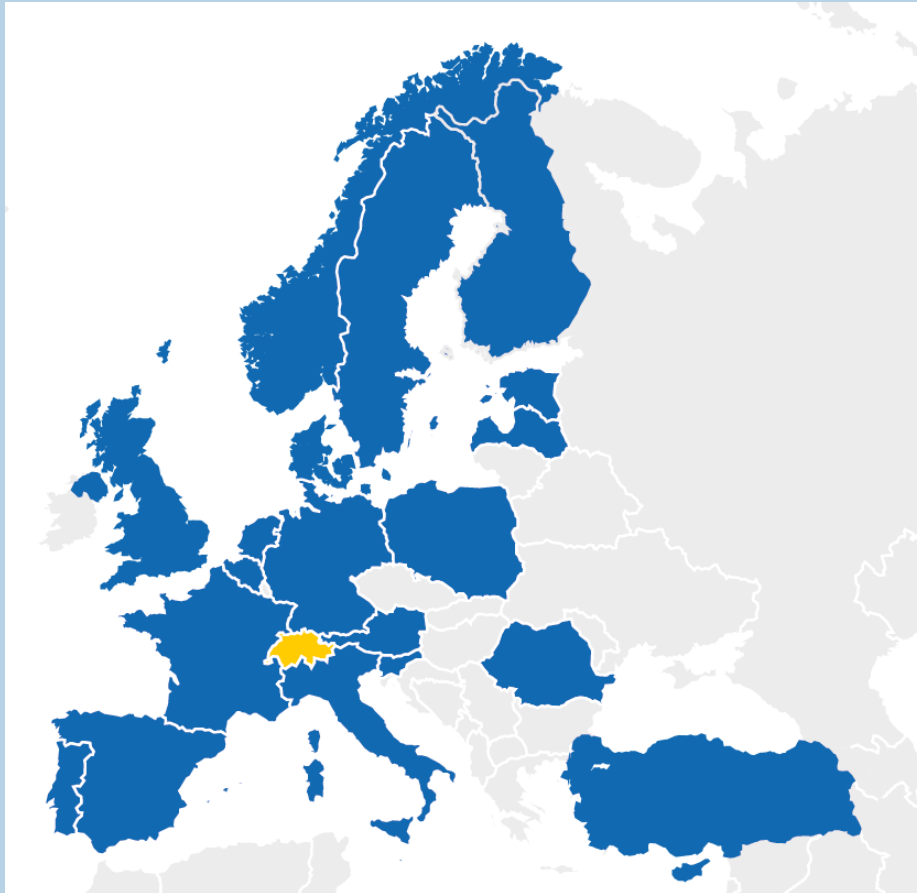
# How to Communicate and Interact with Other Networks

Johannes Bockstefl, FFG (Austrian Research Promotion Agency)

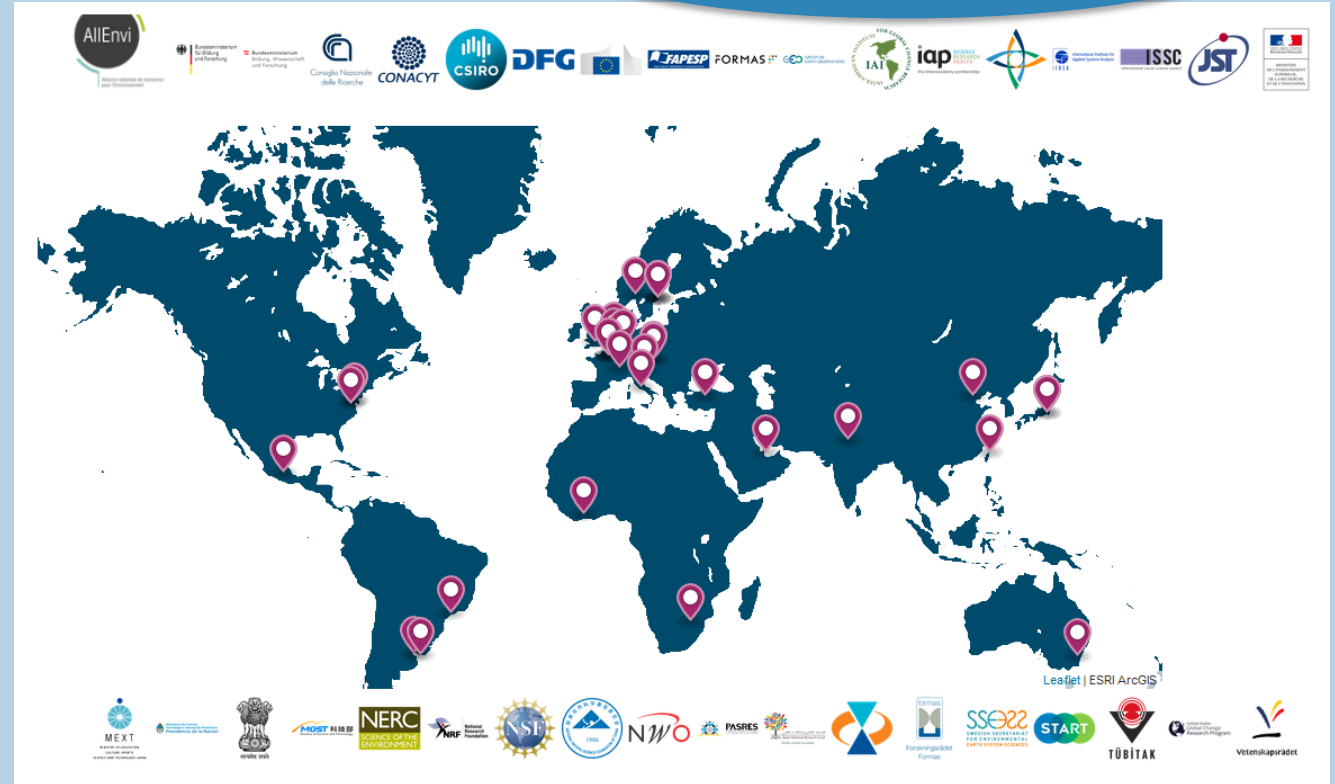
*ERA-LEARN Workshop: Implementing ERA-NET Cofund  
Berlin, Oct. 7, 2019*

# JPI Urban Europe and the Belmont Forum: Enlarging the Network

Plus: access to START (Africa) & Future Earth



JPI Urban Europe countries (20 + CH)



Belmont Forum member organisations: 22 countries from 6 continents + partner organisations (e.g. EC)

# Finding Common Ground: The Sustainable Urbanisation Global Initiative (SUGI)

---

The **Sustainable Urbanisation Global Initiative – Food-Water-Energy Nexus, SUGI-FWE Nexus** for short, was established by the Belmont Forum and the Joint Programming Initiative (JPI) Urban Europe in order to bring together the fragmented research and innovation expertise across the globe to find innovative new solutions to the Food-Water-Energy (FWE) Nexus challenge. SUGI-FWE Nexus aims to develop more resilient, applied urban solutions that build on research and innovation efforts from across the globe, and which will benefit a much wider range of global markets.



# The SUGI Call (ERA-NET Cofund EN-SUGI 2016-21)

---

**24 funding agencies** from 20 countries + 2 ministries + START (Africa):

- **JPI Urban Europe:**  
FFG and BMVIT (AT), FWO (BE), Innoviris (BE), RPF (CY), Jülich and BMBF (DE), ANR (FR), VIAA (LV), NWO (NL), RCN (NO), NCN (PL), UEFISCDI (RO), Formas (SE), SWEA (SE), ARRS (SI), TÜBITAK (TR), AHRC (UK), ESRC (UK), Innovate UK (UK)
- **Belmont Forum:**  
MINCyT (AR), FAPESP (BR), JST (JP), QNRF (QA), MOST (TW), NSF (US), START (all African PIs)

Total funding 28.5 MEUR, 15 projects funded

# SUGI Cooperation Challenges I

---

- **Different languages:**  
Networks tend to develop their own language and abbreviations; harmonisation of terms in documents used in the networks needs awareness and resources.  
e.g. ERA-NET Cofund scheme as a whole; „Collaborative Research Action“ (CRA) vs. call; „Panel of Experts“ (PoE) vs. Expert Panel; etc.
- **Degree of organisation of network:**  
ERA-NET Cofund actions usually are well organised and staffed, this is not necessarily the case within other networks. Degree of involvement of different organisations within the networks varying (e.g. 2 continuously not responding organisations from Africa and Australia).
- **Evaluation rules:**  
Clear ranking needed because of ERA-NET Cofund rules vs. simple „yes/no“ decision on the Belmont Forum side → as ranking was not published, no problem arised for the BF

# SUGI Cooperation Challenges II

- **Data protection:**  
Data exchange with the BF was crucial issue (GDPR); BF contractor for Grant Operations System now complies to the **EU-US and Swiss-US Privacy Shield Frameworks** (<https://www.privacyshield.gov/>)



The screenshot displays the Belmont Forum website's "SYSTEM PRIVACY AND LEGAL STATEMENT" page. The header features the Belmont Forum logo and the text "BELMONT FORUM: BELMONT GRANT OPERATIONS SYSTEM". Below the header, there are navigation links for "+ HOME" and "+ HELP". The main content area is titled "SYSTEM PRIVACY AND LEGAL STATEMENT" and includes a "STATEMENT" section with a numbered list of topics:

1. [Introduction](#)
2. [Why do we process your data?](#)
  - 2.1. [Purpose of the processing](#)
  - 2.2. [Lawfulness of the processing](#)
3. [Which data do we collect and process?](#)
4. [How long do we keep your data?](#)
5. [How do we protect your data?](#)
6. [Who has access to your data and to whom is it disclosed?](#)
  - 6.1. [Sharing of Your Information](#)
  - 6.2. [Future Sharing of Your Information](#)
  - 6.3. [EU-US and Swiss-US Privacy Shield Frameworks](#)
7. [What are your rights and how can you exercise them?](#)
8. [Notices for BFgo Users](#)
  - 8.1. [Providing Others' Personal Data](#)
  - 8.2. [User Responsibilities](#)
9. [Contact information](#)

Below the list, there are three annexes:

- [Annex 1: Data Maintained per CRA and Process](#)
- [Annex 2: List of Belmont Forum Members and Partners per CRA](#)
- [Annex 3: BFgo System Support Contractor EU-US and Swiss-US Privacy Shield Certification](#)

On the left side of the page, there is a navigation menu with links for "HOME", "PRIVACY & LEGAL STATEMENT", and "COOKIES".

# SUGI Cooperation Advantages

---

- **Worldwide partnership for inter- and transdisciplinary research:**  
Great cooperation opportunities for European awardees with organisations outside Europe (e.g. Stanford University, Yale University, Keio University/JP, ...); global project outreach & visibility
- **Pooling of resources:**  
Interim project reviews by external experts possible (financed by BF and JPI UE) → feedback for projects
- **Mutual exchange and learning:**  
E.g. project monitoring: mutual exchange for further development of project monitoring & impact assessment; use of BFgo system as JPI UE system has not been in place at the beginning of the action

# JPI UE Experiences Beyond SUGI

---

- **Joint Call with China (NSFC) – 2017/18:**
  - **Administrative barriers:** NSFC declared a lot of proposals as ineligible as wrong science classification codes were used in their submission system
  - **Cultural differences:** Joint JPI UE – NSFC evaluation showed different attitudes towards themes of crucial interest for JPI UE (e.g. interdisciplinarity); different cultural habits (e.g. potential loss of reputation for some Chinese evaluators in case of adaptation of assessments); and language barriers (English)
  - Beyond that, **big interest of NSFC to cooperate with and learn from Europe** (further development of evaluation culture instead of simple yes/no decision)



# Contact

---

**Johannes Bockstefl**

FFG Austrian Research Promotion Agency

[johannes.bockstefl@ffg.at](mailto:johannes.bockstefl@ffg.at)

---