

Introduction to ERA-LEARN

Roland Brandenburg, FFG

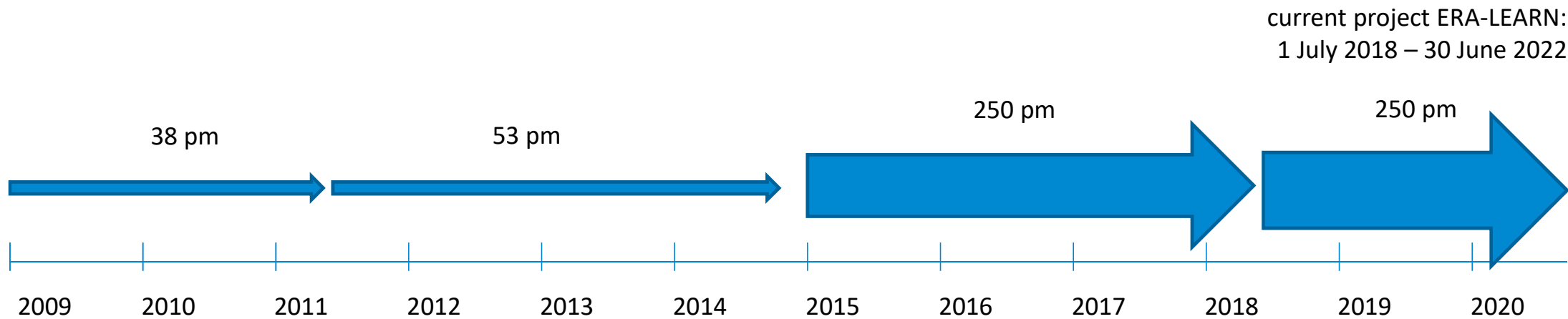
ERA-LEARN coordinator

7 Oct 2019

Background

ERA-LEARN: supporting Public-Public-Partnerships (P2P) since 2009;

4 phases: 2009-2011; 2011-2014; 2015-2018; 2018-2022



ERA-LEARN objectives 2018-2022

- increase the visibility of ERA-LEARN by **intensifying the close interaction of ERA-LEARN with the P2P community** to make it more user-friendly and attractive to the P2P community;
- **increase the relevance by applying a more thematic approach** in tackling the issues and challenges identified by P2Ps;
- **support P2Ps** with evidence in view of the next EU Framework Programme;
- **support impact assessments** by offering trainings and real, full scale pilot assessment exercises as well as special tool-kits to provide guidance and advice addressing also the development of key performance indicators (KPIs).
- **identify and spread good practise** for specific common P2P challenges such as **widening** of participation and **inclusiveness** of less research intensive countries, **internationalisation** of P2P networks, **reaching out to industry and innovation**;
- engage the P2P community in a **dialogue with other stakeholders** or initiatives such as **Public-Private Partnerships (PPPs)**.
- facilitate the identification and handling of **emerging issues** in relation to P2P strategic development, operation and performance.
- **closer interaction** of ERA-LEARN with the P2P community

ERA-LEARN (2018-2022) Consortium

	Country	Organisation	Organisation long
1	(AT)	FFG	Austrian Research Promotion Agency
2	(AT)	AIT	Austrian Institute of Technology
3	(DE)	DLR	DLR Project Management Agency
4	(DE)	VDI/VDE-IT	VDI/VDE Innovation + Technik GmbH
5	(FI)	AKA	Academy of Finland
6	(IT)	MIUR	Ministry of Education, University and Research
	(IT)	CNR	CONSIGLIO NAZIONALE DELLE RICERCHE
7	(NO)	RCN	Research Council of Norway
8	(UK)	OPTIMAT	Optimat Ltd
9	(UK)	UNIMAN	Manchester Institute of Innovation Research
10	(GR)	AMANATIDOU	Amanatidou Efthymia
11	(PL)	NCN	National Science Centre

ERA-LEARN work plan

WP	Work package title
1	Future Interaction and Strategy
2	Increase impact of P2Ps
3	Monitoring & impact assessment
4	Communication, Cooperation, Dissemination and Feedback
5	Web-based platform
6	Coordination & Management

Find Information: Current landscape

The ERA-LEARN Portal



[HOME](#) [ABOUT](#) [CONTACT](#) [NEWSLETTER](#) [Twitter](#)

Search ... 

[Partnerships in a Nutshell](#) [Explore P2Ps](#) [Support for P2Ps](#) [Documents](#) [News and Events](#)

R&I Partnerships

[Home](#) / [Partnerships in a Nutshell](#) / [R&I Partnerships](#) / [What are R&I Partnerships?](#)

What are R&I Partnerships?



Research and innovation partnerships have been introduced into the European R&I landscape following the Lisbon strategy with the aim to develop the European Research Area (ERA). These partnerships were originally designed and have been further developed to overcome the fragmentation in the R&I landscape, to avoid duplication of efforts, to address economic crisis, competitiveness and innovation.

Over the past years there has been a proliferation of instruments and initiatives oriented towards coordination, collaboration, and even alignment of national strategies and programmes in further developing the ERA and tackling societal challenges while also strengthening European competitiveness.

Related Files



15 Years of European Public-Public Partnerships in Research & Innovation

Last Change: 13/11/2017



Find Information: Transition to Horizon Europe

The ERA-LEARN Portal

[Home](#) / [Partnerships in a Nutshell](#) / [R&I Partnerships](#) / [Transition of partnerships to Horizon Europe](#)

Transition of partnerships to Horizon Europe



A New Generation of European Partnerships and increased Collaboration with other EU Programmes

On 7 June 2018 the Commission adopted its proposal for Horizon Europe, the 9th EU Framework Programme for Research and Innovation, which will become operational from January 2021 onwards. While the proposal's overall policy is 'evolution and no revolution', the part on 'European Partnerships' differs significantly from Horizon 2020.

For the first time, an overall policy approach for all kinds of partnerships, from ERA-NETs to JTIs, FET Flagships and even the EIT/KiCs has been developed and uniformly labelled 'European Partnerships'.

The **Horizon Europe** proposal distinguishes between **3 types of European Partnerships**:



→ [ERA-LEARN discussion papers on current initiatives](#)

→ [Consultation of Member States](#)

Related Files



ERAC ad hoc WG on partnerships, Final report

Last Change: 07/12/2018

Publisher: European Commission ERAC

The ERAC ad hoc group on partnerships was established with the specific task to translate the high policy ambitions into a concrete set of requirements and strategie ...

Category: Report

Download

Explore our Database

The ERA-LEARN Portal

Partnerships in a Nutshell Explore P2Ps Support for P2Ps Documents News and Events

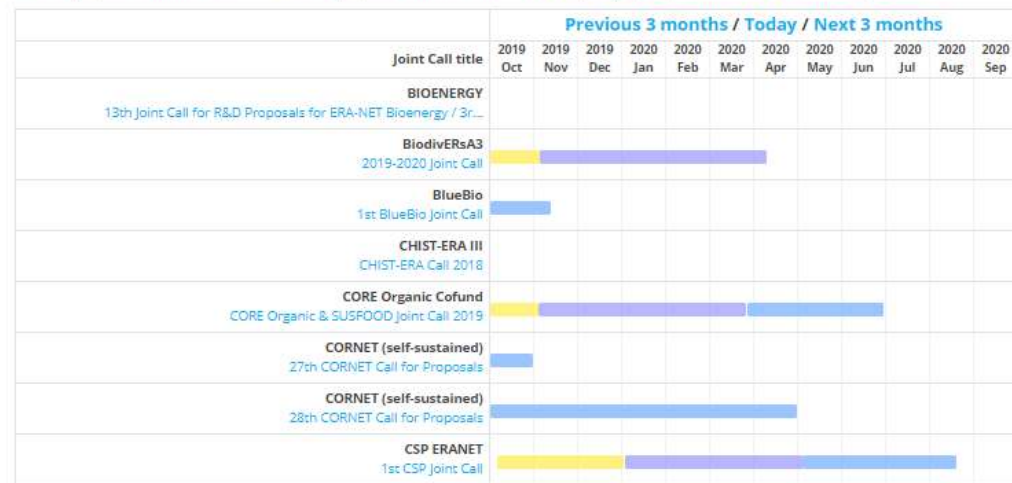
ERA-LEARN

[Home](#) / [Explore P2Ps](#)

Joint Calls Calendar

*Please note: The database of joint calls and funded projects is depending on data received by the networks.
Please contact us to display your calls: [office\(at\)era-learn.eu](mailto:office(at)era-learn.eu)*

■ Pre-proposal submission ■ Full-proposal submission ■ Open for proposal ■ Evaluation period



Submit your calls to the call calendar

The ERA-LEARN Portal

ERA-LEARN

[Home](#) / [Explore P2Ps](#)

Submit a Call

Title of the joint call

Web site

Please choose the network

Type of joint call

- ☒ One Stage
- ☐ Two Stages
- ☐ Open
- ☐ Other

Type of joint call - value for other

Call is co-funded

- ☒ yes
- ☐ no

Launch date



Find thematic information

The ERA-LEARN Portal

Explore P2Ps

[Home](#) / [Explore P2Ps](#) / Thematic clustering of ERA partnerships

Thematic clustering of ERA partnerships

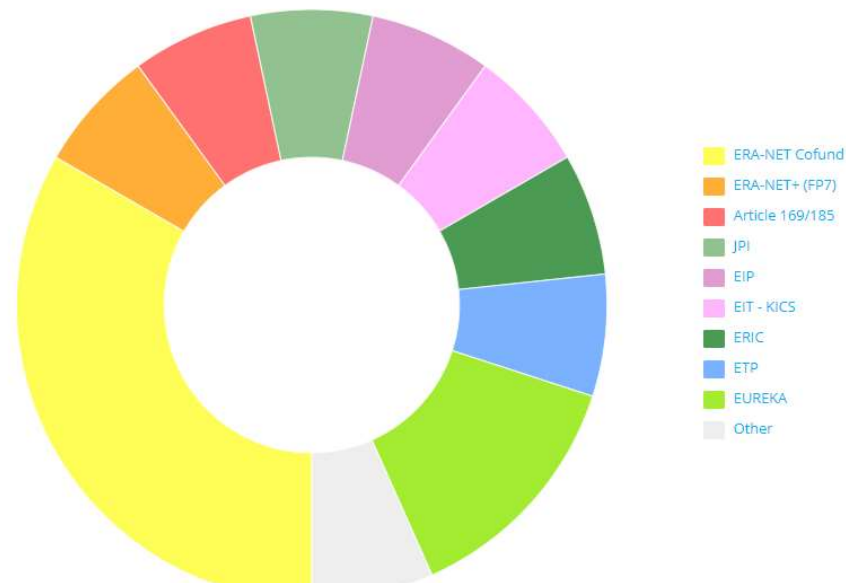
Several ERA initiatives operate in neighbouring or even overlapping fields. Exploitation of experience and close cooperation is recommended. For example, for each of the current JPI we find a number of relevant ERA-NETs. The chart below shows current ERA initiatives sorted by thematic area, including initiatives which ended recently.

Select Thematic Area



Materials

Please click on the segments to get the respective link list.



R&I Partnerships

[Home](#) / [Partnerships in a Nutshell](#) / [R&I Partnerships](#) / [Good Practices](#)

Good Practices

Some P2Ps have been especially successful in reaching their goals and in making considerable impacts on e.g. science, industry or the general society. Several of these examples are illustrated below without claiming completeness. ERA-LEARN provides several other good practice examples on the pages on [Joint Activities](#) and [Good Practice Examples on Alignment](#).

ALL

ALL



BiodivERsA

BiodivERsA, now in its third phase (2015-2019), addresses the need to develop science-based approaches to better preserve and sustainably use biodiversity and to develop nature-based solutions while promoting European innovation and competitiveness. BiodivERsA presents a series of impacts starting with enduring connectivity i.e. long-standing cooperation of the partners since 2005 and increased numbers of participating countries and partners from 13 and 20 at the outset to 19 and 32 in 2015. With almost regular annual calls since 2008 BiodivERsA has managed to spend a total of € 80 m in cash (€ 134 m in



BONUS

BONUS is an important case of P2P impacts on policy and regulation in the battle against overfishing and for the sustainability of the Baltic Sea fish populations. As an example, BONUS fisheries projects InSPIRE and GOHERR are actively supporting the process of providing scientific information, to define total allowable catch and maximum sustainable yield of fish population in the Baltic Sea by collecting data on 19 indicators. During their first years of implementation the two projects reported 12 contributions to the development and implementation of fisheries regulations, policies and management practices; 14



E-Rare

In E-Rare, since 2007, the participation of funders in joint transnational calls has increased from 6 to 23 funding agencies. For 70% of the funders, E-Rare is the unique programme to finance Rare Disease (RD) research. E-Rare invested 98 M € in 9 calls to finance 117 transnational consortia. The publication output of the funded projects results in an outstanding publication record with average impact factor of 9.5. Hundreds of new genes were identified, new diagnostics protocols and guidelines established and three patents filed. E-Rare



Support for P2Ps

[Home](#) / [Support for P2Ps](#) / [Monitoring and Assessment](#)

Monitoring and Assessment



add to pdf

Partnerships in research and innovation can produce various types of impacts ranging from scientific/technological impacts on the specific research area addressed; to economic impacts that denote changes at the organisational and national budgetary levels; to cultural/attitudinal and conceptual or policy-related impacts reflecting changes to mind-sets on how a research issue should be addressed or behaviours concerning international collaboration, for instance. Connectivity and capacity building impacts are no less important, both for project beneficiaries and the members of the networks themselves. Structural changes in the national or transnational landscape can be both a prerequisite as well as an impact of these partnerships.

Common practice in the evaluation of research programmes reflects the notion that the impact of the whole programme is the aggregate impact of the component projects. P2Ps, however, are not programmes; they are networks. Their very existence and the way a network is designed, structured and operated will produce additional impacts (sometimes called 'process impacts'). Any framework for P2P evaluation should allow for a variety of impact types to be assessed.

By the end of 2017, more than 570 joint calls were launched by P2P networks with a combined investment of some Euro 5.8 billion in more than 6,400 transnational projects. Most of the networks, and/or the national funding organisations, have some form of monitoring system for the projects that are spawned from Joint Calls but assessment of their economic, societal and/or environmental impacts is less common. Identifying and measuring the impact of this

- [Practices of Evaluation and Impact Assessment](#)
- [Tools for internal review of participation in networks](#)
- [Reference Library](#)

Related Files



Guide for P2P impact assessment

Last Change: 11/05/2017
Publisher: ERA-LEARN

News and Events

[Home](#) / [News and Events](#) / [Events](#)

Add Event

Please view our News and event policy!

Your data will be checked and published soon.

Title

Description Please describe the event in brief!

Start date



End date Please provide an end date if it differs from start date!



Contact person email Please provide an email address for questions!

Please provide a link to the event website

ERA-LEARN

[Home](#) / [Newsletter](#)

Subscribe to the ERA-LEARN newsletter

☐ I have read and agree to the [Privacy Policy](#)

E-Mail

Issues

- [NEWSALERT](#) | 09 2019
- [NEWSALERT](#) | 07 2019
- [NEWSALERT](#) | 06 2019
- [NEWSALERT](#) | 04 2019
- [NEWSALERT](#) | 03 2019
- [NEWSALERT](#) | 12 2018
- [NEWSALERT](#) | 09 2018
- [NEWSALERT](#) | 10 2018
- [NEWSALERT](#) | 07/08 2018
- [NEWSALERT](#) | 05 2018
- [NEWSALERT](#) | 03 2018



Support for P2Ps

[Home](#) / [Support for P2Ps](#) / [ERA-NET Cofund](#)

ERA-NET Cofund



ERA-NET Cofund under Horizon 2020 is designed to support Public-Public Partnerships, including Joint Programming Initiatives between Member States, in their preparation, establishment of networking structures, design, implementation and coordination of joint activities as well as Union topping-up of a trans-national call for proposals. It is implemented by using "programme co-fund actions". It allows for programme collaboration in any part of the entire research-innovation cycle.

The main and compulsory activity of the ERA-NET Cofund under Horizon 2020 is the implementation of the co-funded joint call for proposals that leads to the funding of trans-national research and/or innovation projects (one co-funded call per Grant Agreement).

ERA-LEARN offers the Workshop "Implementing ERA-NET Cofund" on an annual basis. More information is available [here](#).

- [ERA-NET Cofund under Horizon 2020 – background information](#)
- [ERA-NET Cofund under H2020 - practical information](#)

Implementing Joint Calls

[Home](#) / [Support for P2Ps](#) / [Implementing Joint Calls](#) / [Call planning & preparation](#)

Call planning & preparation



add to pdf

Before launching a call all major milestones have to be thoroughly addressed and decisions need to be taken. Special attention should be paid to ensuring appropriate financial commitments from each funding agency participating in the joint call. Committed budgets should be in balance with the demand, ie. should be reasonable with respect to the expected number of submitted proposals. If the committed budgets are not in line with the requests from the local research communities problems will arise when it comes to the joint funding decisions. Another important aspect is the overall time frame of the call. This should be well thought through taking into account the individual steps involved in the call procedure.

- Introduction
- Timing & Scope
- Call administration and financial commitment
- Promotion of the call

Visit the portal

The ERA-LEARN Portal



[HOME](#) [ABOUT](#) [CONTACT](#) [NEWSLETTER](#)

Search ...



[P2P in a Nutshell](#)

[Explore P2Ps](#)

[Support for P2Ps](#)

[Documents](#)

[News and Events](#)



Public-to-Public Partnerships (P2P)

Public-to-Public Partnerships (P2Ps) are research and innovation networks of public organisations like ministries or funding agencies. P2Ps align national strategies and help to overcome fragmentation of public research effort. They include networks supported by the European Commission such as ERA-NETs and Art 185s as well as member state-led Joint Programming Initiatives.

[Read more](#)



Welcome to ERA-LEARN

<https://www.era-learn.eu>