

# Clean Energy Transition Partnership



**Michael Hübner**  
Coordinator

Austrian Federal Ministry of  
Innovation, Mobility and  
Infrastructure



**Kristina Starborg**  
Co- Coordinator

Swedish Energy Agency

[www.cetpartnership.eu](http://www.cetpartnership.eu)  
[coordination@cetpartnership.eu](mailto:coordination@cetpartnership.eu)



### 30+ Countries

20+ EU Member States  
+ 10 Associated Countries

### 47+ Funding Partners

Funding Agencies  
& Ministries

Co-funded by the  
European Commission

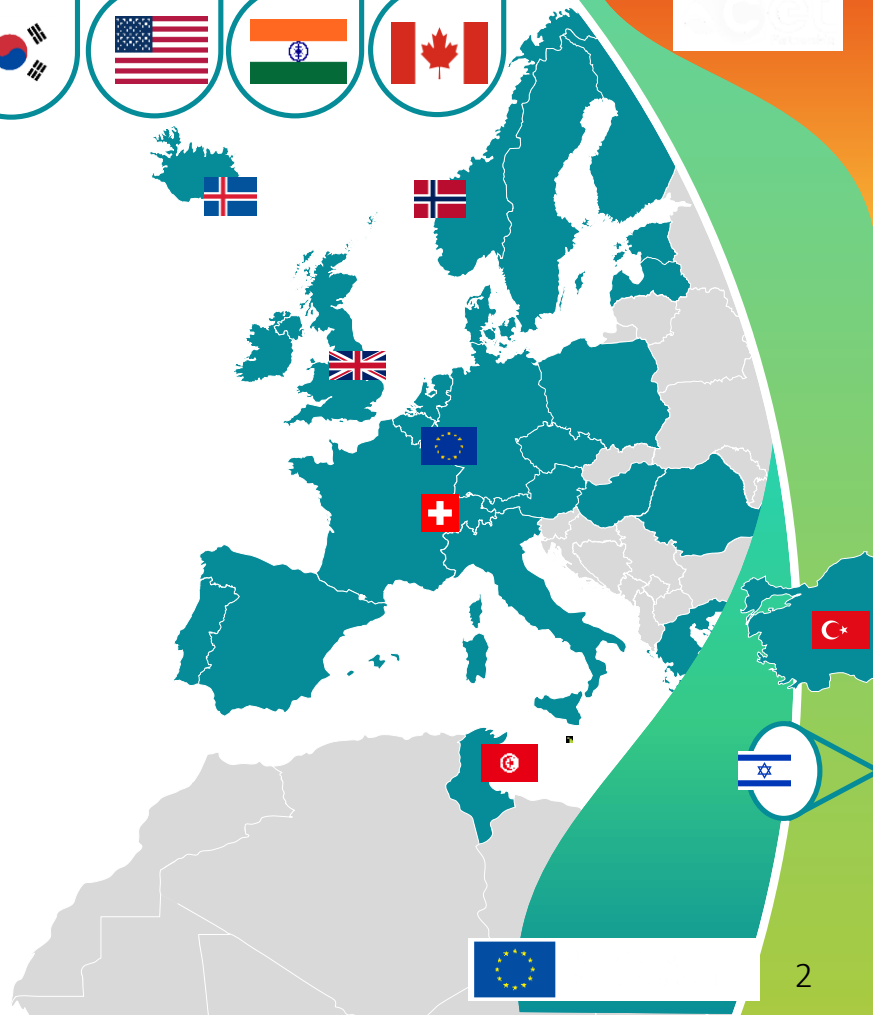
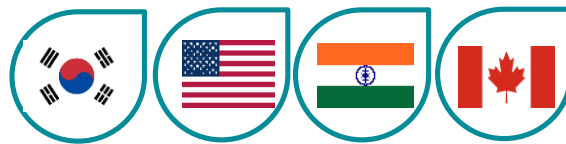
### 13 Coordination Units

Coordinator: BMK / SWEA

### Annual Calls for RTDI Projects

100 – 140 M € per year  
2022 - 2027

*Call 2024  
Total > 130 M €*



# Multithematic JPP – 7 Transition initiatives



**TRI 1: Integrated Net-zero-emissions Energy System**



**TRI 2: Enhanced zero emission Power Technologies**



**TRI 3: Enabling Climate Neutrality with Storage Technologies, Renewable Fuels and CCU/CCS**



**TRI 4: Efficient zero emission Heating and Cooling Solutions**



**TRI 5: Integrated Regional Energy Systems**



**TRI 6: Integrated Industrial Energy Systems**



**TRI 7: Integration in the Built Environment**

## 1. We provide funding for impact

We pool national budgets of over 100 Mill EUR for annual joint calls.

More than 50 national and regional RTDI funders from over 30 countries align their priorities.

## 2. We connect change makers

We identify and connect change makers from industries, the research community & policy makers.

We built capacities for their successful collaboration.

## 3. We leverage innovation and knowledge

By harnessing the insights of our projects and collaborations – locally & internationally.

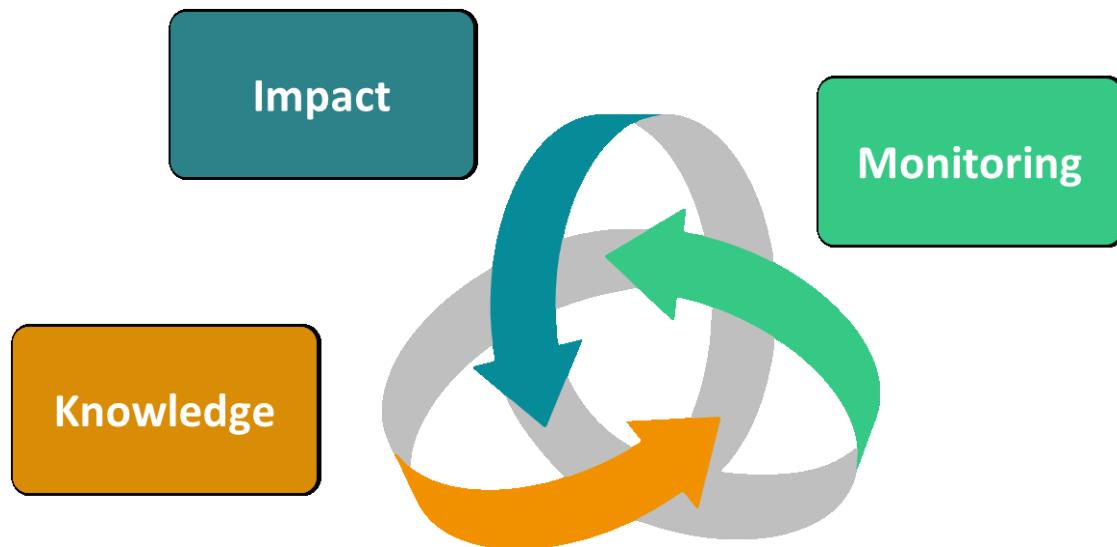
We actively share strategic knowledge across countries and industries.

# Impact Pathways

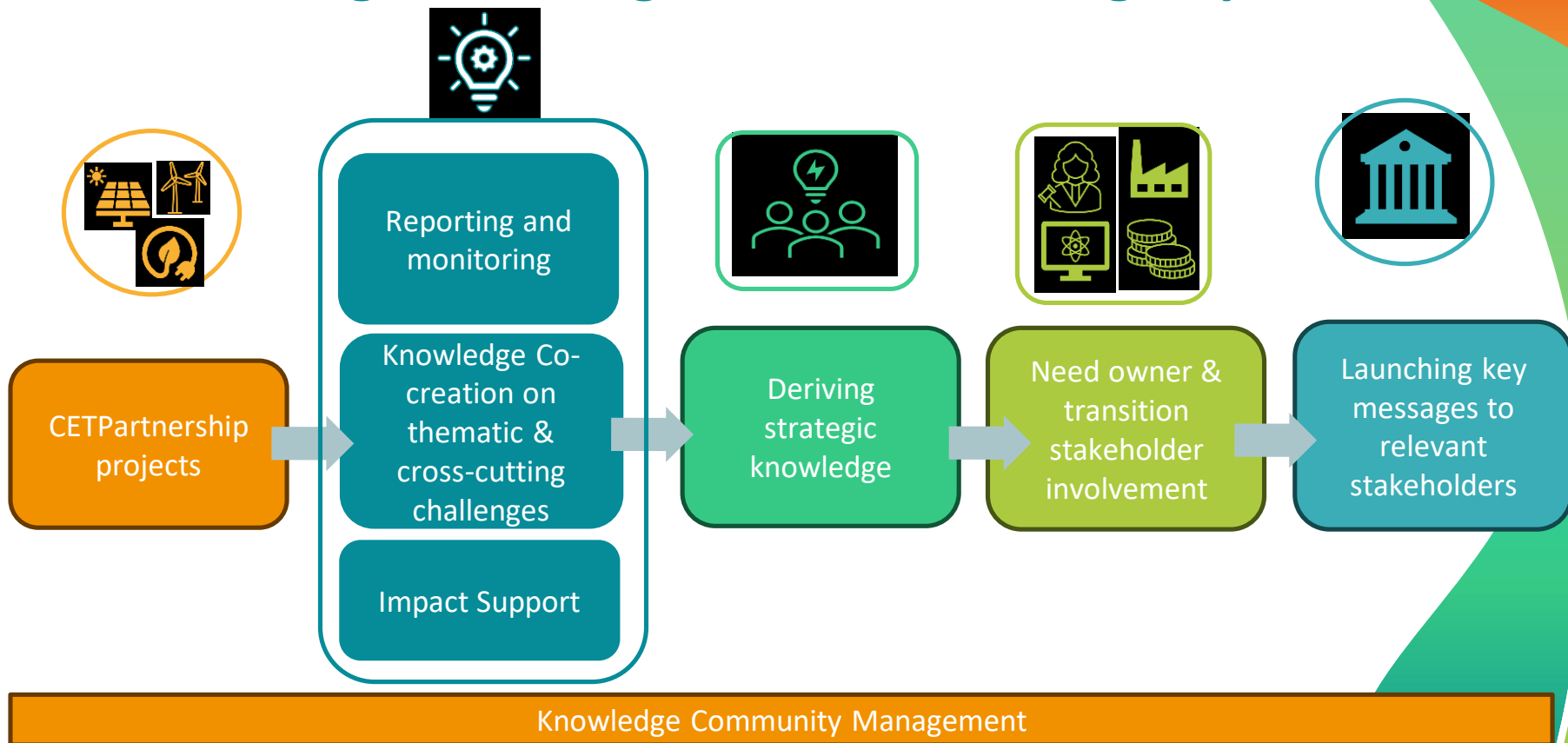
Meta Impact Pathway 1:  
**Successful Transition of European Energy Systems**  
(Focus: Innovation)

Meta Impact Pathway 2:  
**European Solution Providers in Global Value Chains**  
(Focus: Technology Development)

Meta Impact Pathway 3:  
**Prepare for Future Developments**  
(Focus: Research)



# Co-creating Knowledge and Maximising Impact




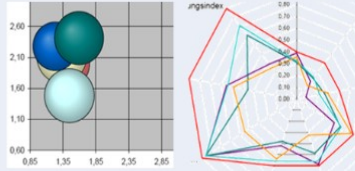


# Data - Information - Knowledge

Knowledge  
Creation

Monitoring

Reporting

<b>Knowledge</b>	ask questions, discuss in a network, link to other info, learn from others, ...																												
<b>Information</b>	put into context, aggregate, anonymize, interpret, select, implement privacy, ...																												
<b>Data</b>	collect, store, backup, implement data security, ...	<table border="1"> <tr><td>22.12.14</td><td>LK</td><td>X-URLAUB</td></tr> <tr><td>19.12.14</td><td>LK</td><td>MC-NR-028</td></tr> <tr><td>19.12.14</td><td>LK</td><td>MC-FE-19</td></tr> <tr><td>18.12.14</td><td>LK</td><td>MC-FE-19</td></tr> <tr><td>17.12.14</td><td>LK</td><td>MC-FE-19</td></tr> <tr><td>17.12.14</td><td>LK</td><td>MC-A-GF</td></tr> <tr><td>16.12.14</td><td>LK</td><td>MC-FE-19</td></tr> <tr><td>15.12.14</td><td>LK</td><td>MC-NE-MV</td></tr> <tr><td>12.12.14</td><td>LK</td><td>MC-A-MEE</td></tr> </table> <div> <b>Energie und Klimaschutz</b>  <input type="checkbox"/> Betriebliche Energieberatung  <input checked="" type="checkbox"/> Energiemanagement  <input type="checkbox"/> Fördermittel und Steuererstattungen  <input type="checkbox"/> Förderung und Forschung  <input type="checkbox"/> Fortbildungen  <input type="checkbox"/> Kommunale Energie- und Klimaschutzkonzepte         </div> <div> <b>Förderung und Forschung</b>  <input type="checkbox"/> Beantragung von Fördermitteln  <input type="checkbox"/> Entwicklung von Förderprojekten         </div>	22.12.14	LK	X-URLAUB	19.12.14	LK	MC-NR-028	19.12.14	LK	MC-FE-19	18.12.14	LK	MC-FE-19	17.12.14	LK	MC-FE-19	17.12.14	LK	MC-A-GF	16.12.14	LK	MC-FE-19	15.12.14	LK	MC-NE-MV	12.12.14	LK	MC-A-MEE
22.12.14	LK	X-URLAUB																											
19.12.14	LK	MC-NR-028																											
19.12.14	LK	MC-FE-19																											
18.12.14	LK	MC-FE-19																											
17.12.14	LK	MC-FE-19																											
17.12.14	LK	MC-A-GF																											
16.12.14	LK	MC-FE-19																											
15.12.14	LK	MC-NE-MV																											
12.12.14	LK	MC-A-MEE																											

Source: CETPartnership Approach, Methodology and Management Concept v1.0



# Project Database

## 2023 Projects

Show 10 entries

Search:

PROJECT ID	ACRONYM	TRI	CALL MODULE	TITLE	
CETP-FP-2023-00006	PRINCESS	TRI 2	CM2023-03A	TriPly peRIodic mINimal SurfaCEs (TPMS) for Solar plants	<a href="#">i</a>
CETP-FP-2023-00014	CoEnerBuild	TRI 2	CM2023-02	Buildings' virtual power plant towards carbon-neutral electricity and grid resilience	<a href="#">i</a>
CETP-FP-2023-00024	CO2SafeQuest	TRI 3	CM2023-04	Unravelling Faults properties and behavior for CO2 geological storage	<a href="#">i</a>
CETP-FP-2023-00028	SHEETS	TRI 3	CM2023-04	Sorbent based processes for highly efficient and compact CO2 capture technologies	<a href="#">i</a>
CETP-FP-2023-00031	RESTOR	TRI 5	CM2023-08	Renewable Energy STORage planning model for islandic energy systems (RESTOR)	<a href="#">i</a>
CETP-FP-2023-00040	E-Fryer	TRI 4	CM2023-06	Electrifying fryers for the food industry through integrated high temperature heat pumps	<a href="#">i</a>
CETP-FP-2023-00045	HVDC4ISLANDS	TRI 1	CM2023-01	HVDC and Hybrid DC/AC Technologies for Reconfigurable Energy Islands	<a href="#">i</a>
CETP-FP-2023-00055	SAHARA	TRI 3	CM2023-05	Solar-Activated Hydrogen production - Advanced Research and Application	<a href="#">i</a>
CETP-FP-2023-00061	Enhance Europe	TRI 7	CM2023-10A	ENergy HARvestiNg ColliEctors for Urban ROad PavEmenT	<a href="#">i</a>
CETP-FP-2023-00065	GEOTWINS	TRI 4	CM2023-07	Digital Twin Components for Deep Geothermal Energy Power and Heat Generation	<a href="#">i</a>

Showing 10 entries


Previous 1 2 3 4 5 6 7 Next

## 2022 Projects

Show 10 entries

Search:

# Project Reporting & Monitoring



## Your Projects

8 Projects

Sort: ↕ A-Z ↕ Project Number ↕ TRI 📅 Year

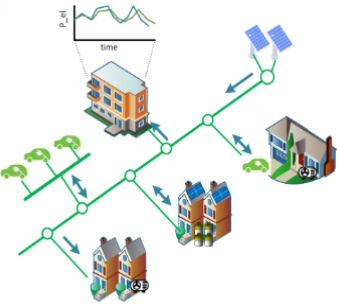
Search projects... ↺ Reset All ↻ Refresh

Filter:

Year: 📅 2022 📅 2023 | TRI: 🏠 TRI 5

### ECom4Future

FIWARE Driven Energy Communities for the Future



🏠 TRI 5: Integrated Regional Energy Systems 🎯 TRI5 - Call module 5: Integrated Regional Energy System

📈 📅 2024 ✅ SUBMITTED

📄 Project Factsheet 📄 Review

# Standard Call Statistics Package

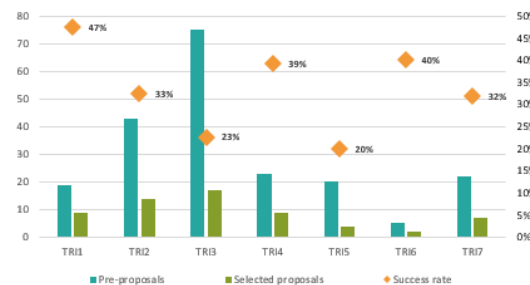


## Call Analysis - TRI Overview

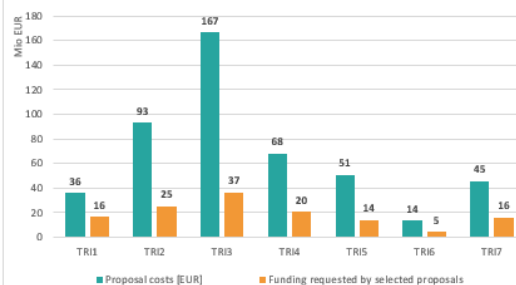
Select Year **2023**



Success rate of proposals



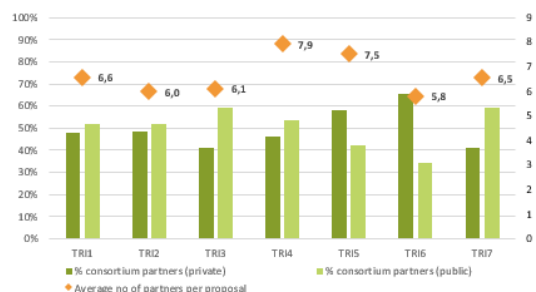
Proposal costs and funding requested [Mio EUR]



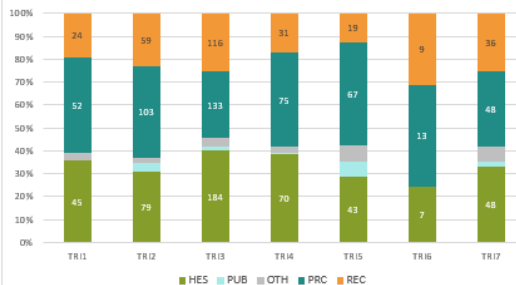
No of proposals per TRL at project start

	TRL 1	TRL 2	TRL 3	TRL 4	TRL 5	TRL 6	TRL 7	TRL at Project Start TRL 8	N/A
TRI1	0	1	13	2	3	0	0	0	0
TRI2	1	10	16	9	6	1	0	0	0
TRI3	3	14	27	23	5	0	1	0	2
TRI4	1	2	8	7	2	2	1	0	0
TRI5	0	3	9	2	4	1	0	0	1
TRI6	0	1	1	2	1	0	0	0	0
TRI7	1	7	7	6	1	0	0	0	0

Consortium partners public vs priv in 2023



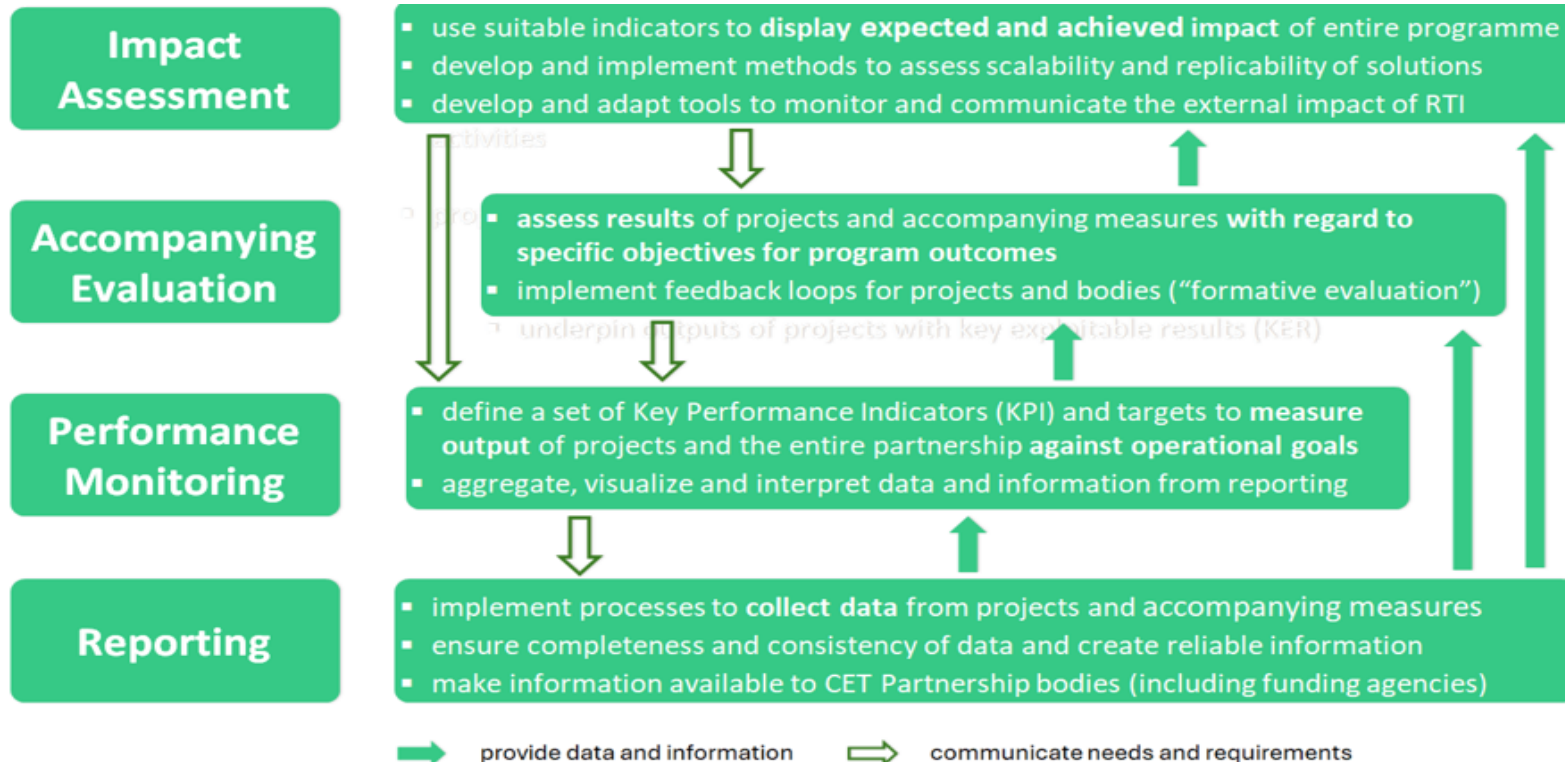
Participation per organisation type



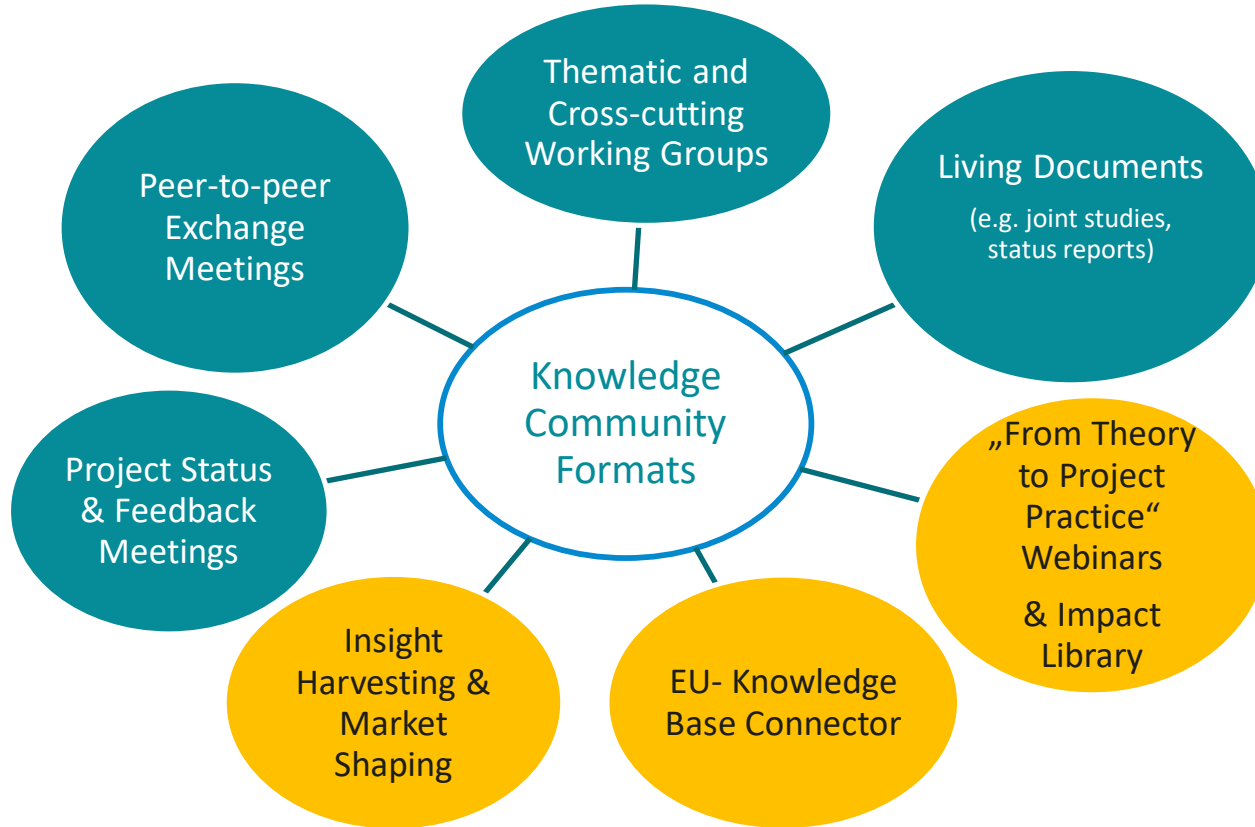
Average TRL increase by project end

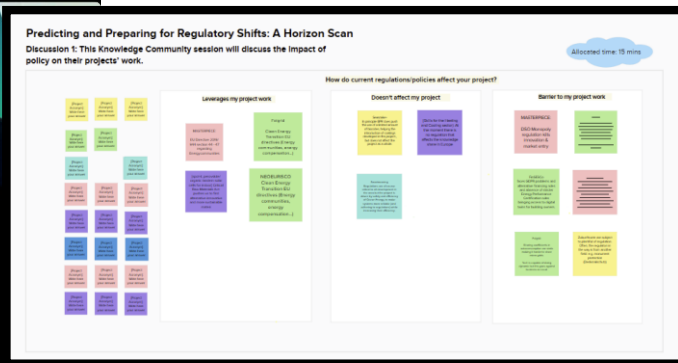
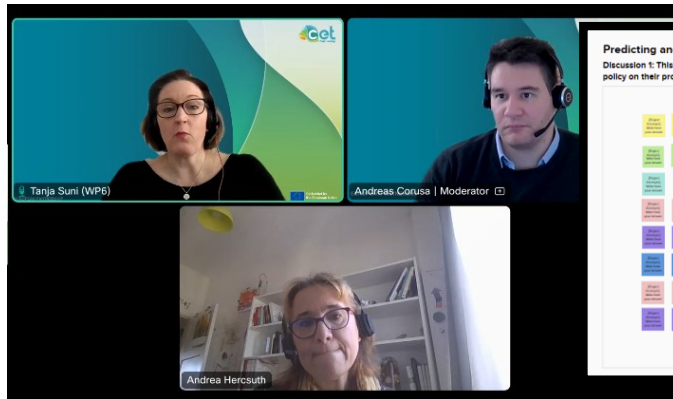
	TRL 1	TRL 2	TRL 3	TRL 4	TRL 5	TRL 6	TRL 7	TRL at Project Start TRL 8	N/A
TRI1	0,0	2,0	2,6	2,5	2,0	0,0	0,0	0,0	0,0
TRI2	1,0	2,3	2,4	2,2	2,0	2,0	0,0	0,0	0,0
TRI3	3,7	3,3	2,5	2,0	2,2	0,0	2,0	0,0	0,0
TRI4	4,0	4,0	2,4	1,9	1,5	2,0	2,0	0,0	0,0
TRI5	0,0	5,0	3,0	2,5	2,8	3,0	0,0	0,0	0,0
TRI6	0,0	3,0	2,0	2,5	2,0	0,0	0,0	0,0	0,0
TRI7	3,0	3,3	2,1	2,2	2,0	0,0	0,0	0,0	0,0

# Reporting – Monitoring – Assessment Framework

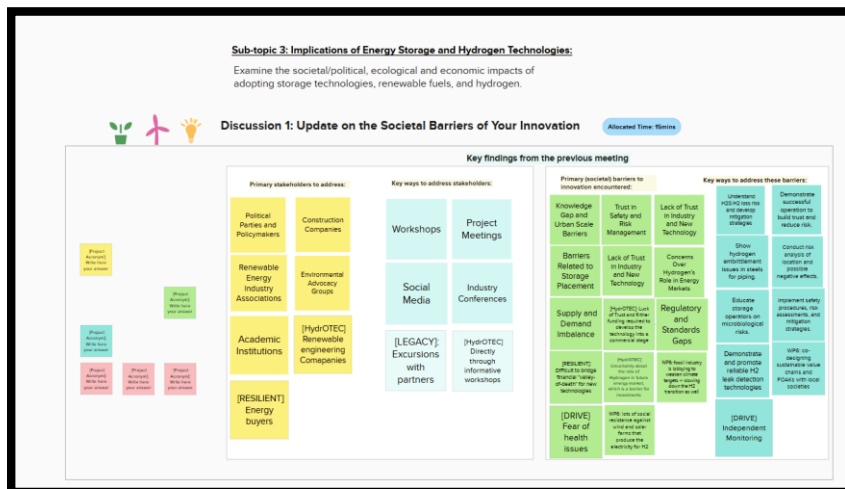


# Actively Working with Projects- Knowledge Community Formats





## Knowledge and Impact Session on Sandboxing and Market Uptake (Annual Conference 2024)



## Cross-Cutting WG on Societal Acceptance and Engagement



# “60 minutes on... From Theory to Project Practice” Webinars

A series of webinars **to support applicants** in developing their proposal.

Standard format:

- Introduction
- Keynote speech from a renowned international expert
- Testimony from an outstanding project with practical expertise on the specific sector of the webinar
- Short conclusions

Recording and montage have been done with the support of Netproducer GmbH

Broadcasting will then be done via the B2Match Platform and CETPartnership Youtube channel



Keynote speech

Prof. **Antonello Monti**, RWTH Aachen University

Testimony

**Angela Berger**, Interoperability Lab

EUROPEAN PARTNERSHIP



Keynote speech

**Steffen Fries**, Siemens AG Germany, Principal  
Engineer Security Technologies

Testimony

**Giovanna Dondossola**, RSE, Cybersecurity  
Project Manager



Keynote speech

Representative of Smart Grid Task Force (*TBD*)

Testimony

Int:net Horizon Europe project (*TBD*)



# The Impact Library



The Impact Library serves as a resource for the projects and TRIs looking for useful methodologies and ways to work successfully with various stakeholders. It is a collection of instructional videos, guidelines, workshop concepts, and best practice stories to help stakeholders and projects/TRIs get the most out of their collaboration.



## STAKEHOLDER ENGAGEMENT

Tools to identify, map, and engage key stakeholders effectively



## EXPLOITATION AND IMPACT

Tools to identify, validate, and exploit key results



## POLICY AND REGULATION

Tools for policy impact, regulatory compliance, and policymaker engagement



## MARKETS AND COMMERCIALIZATION

Tools to assess market readiness and develop commercialization strategies



## SOCIETY AND SUSTAINABILITY

Tools to engage civil society, monitor societal readiness, and ensure overall sustainability

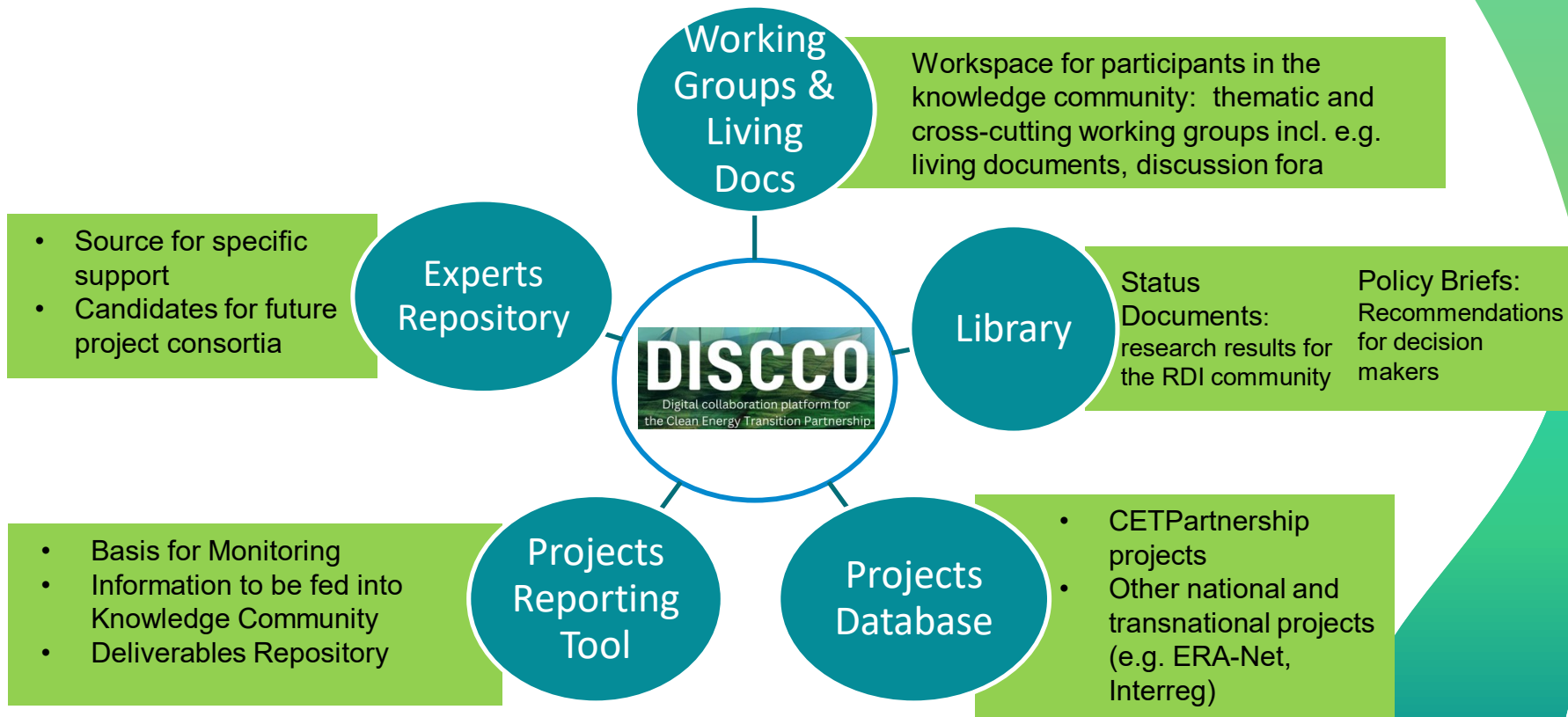


# Digital Collaboration Platform

(not only for knowledge sharing, and monitoring....)



# DISCCO- Tools for Knowledge and Monitoring





We empower and connect your bold  
and innovative endeavors to build an  
energy system that works.