

Romanian profile in P2Ps

Ioana ISPAS

RO delegate in GPC

Head of National Research Programme-Support to JPIs

National Authority for Scientific Research and Innovation



Content

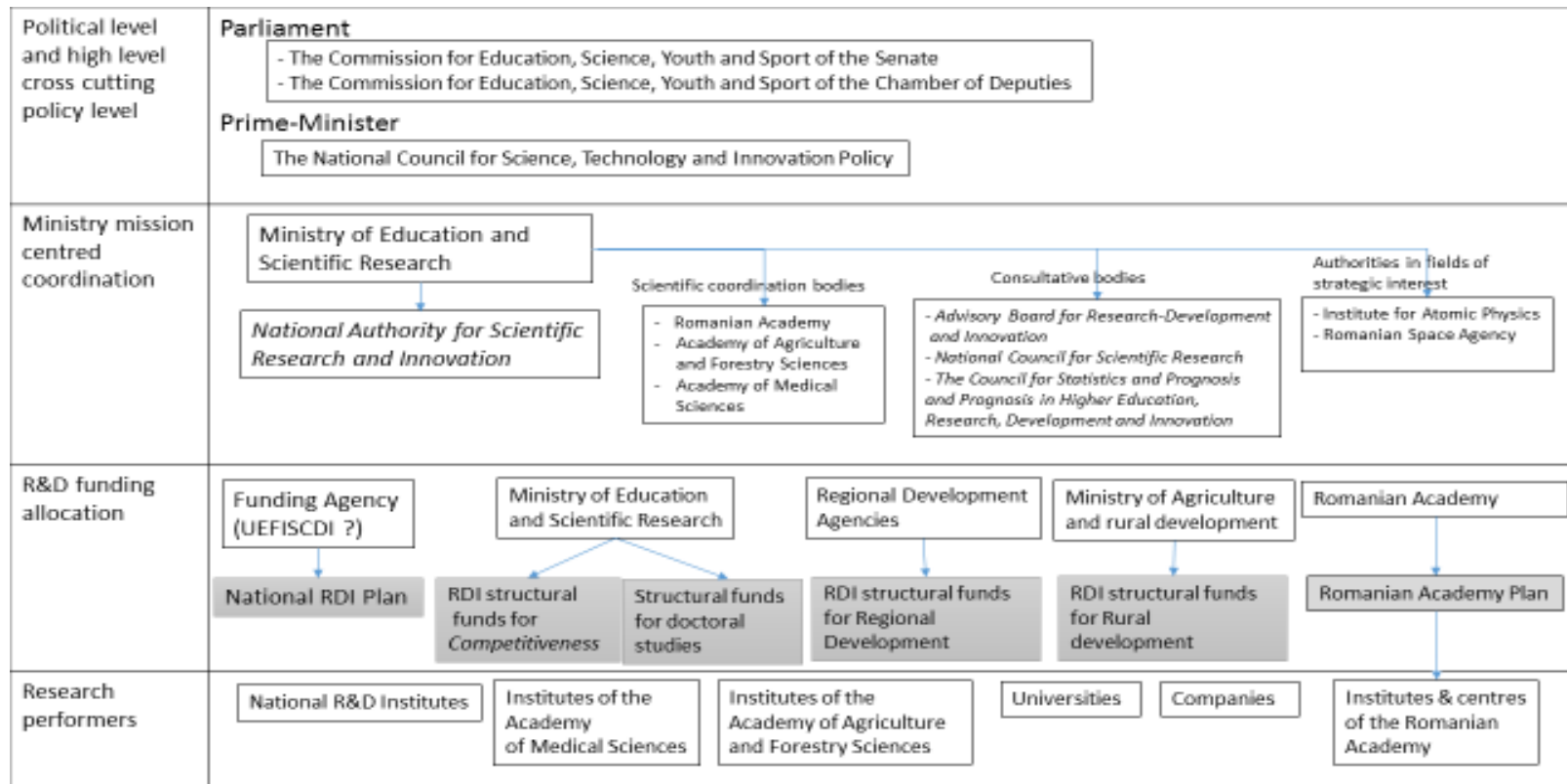
- Romania in European RDI landscape
- Public funding allocation in Romania
- Research funding schemes in Romania
- Romania research landscape
- Romanian Strategy for RDI 2014-2020
- National progress towards realization of ERA
- Participation of RO in P2Ps
- Bibliography



Romania in European RDI landscape

- 9th largest country in terms of population in the EU(with around) 20m inhabitants) in 2013
- 4% of the EU's total population (Eurostat)
- **0.23-0.3% from GDP allocated to research**
- **Target:1% from GDP allocated to research in 2020**

Structure of RDI governance





Role of ANCSI

The ***National Authority for Scientific Research and Innovation (ANCSI)*** :

- coordinated by the ***Ministry of National Education and Scientific Research***
- has all responsibilities of ***the state authority for research-development***
- ensures the ***elaboration, application, monitoring and evaluation of the RDI policies***, consistent with the National RDI Strategy and Plan and the Governing Programme (www.research.ro)
- Leading of National Research Programme for Research- Development and Innovation (2015-2020)

Public funding allocation in Romania

- ANCSI implements the programme Nucleu, an institutional funding instrument for the National R&D Institutes (budget €70.5m in 2013)
- The Intermediary Body for RDI, coordinated by ANCSI, implements the operational programme for RDI structural funds 2014-2020 (with an average annual budget of approx. €120m)
- The Romanian Academy – which has its own chapter in the national budget (€100.7m in 2015) – allocates the budget for its research institutes.
- Different ministries (Ministry of Economy, Ministry of Agriculture, MNESR) manage their separate “sectorial RDI plans” (estimated budget in 2015 below €10m).



Public funding allocation in Romania

Implementing agencies

- *The Executive Agency for Higher Education, Research, Development and Innovation Funding (UEFISCDI)*, subordinated to the MNESR, is the implementing agency for the National RDI Plan 2007-2013/2015-2020
- Romanian Space Agency (ROSA) - is the implementing agency for the National RDI Plan for Space programme
- Institute for Atomic Physics (IFA)-is the implementing agency for the National RDI Plan for Nuclear programme



Research funding schemes in Romania

- **Public RDI system**
- **Institutional funding** (80% from researchers are in public institutes)
- -60% of RDI expenditures
- Public institutes
- RO Academy institutes
- ***Competitive funding***
- National RDI Plan(2015-2020)/2007-2013
- RDI structural funds (mostly concentrated on RIs)
-



Research funding schemes in Romania

Private RDI system – in the very early stage

- Various schemes to build public- private research partnerships
- 1.000 private companies performing R&D (ANCSI statistics)
- Still very good results in EUROSTARS and AAL
- **Target:1% from GDP allocated to research in 2020**



Romanian research landscape

➤ *RDI system*

- 56 public accredited universities
- 47 national R&D institutes
- 65 research institutes and centres of the Romanian Academy

- The network for technology transfer and innovation (ReNITT):
 - 50 specific organizations (technology transfer centres, technology info centres, technology and business incubators)

Romania's RD&I Strategy 2014-2020

- Vision oriented to innovation, based on three pillars:
 1. Business firms are the promoters of innovation;
 2. RD&I provide opportunity for talented people;
 3. Significant progress in priority areas.
- **Smart specialisation directions and priorities:**
 - Bio-economy,
 - Information and Communication Technologies, Security and Space,
 - Energy, Environment and Climate Change,
 - Eco- Technologies and Advanced Materials.
- **Priorities of national interest:** *health*, heritage and national identity, and emerging technologies.

Romania's RD&I Strategy 2014-2020-measures for internationalization

Measures :

- supporting the participation in *Horizon 2020* projects;
- supporting the coordinated participation in European initiatives
- Joint Programming Initiatives (JPIs),
- Joint Technology Initiatives (JTIs)
- European Innovation Partnerships (EIPs)
- implementation of Art.185
- supporting the participation in international bodies (CERN, ESA, etc.)
- funding bilateral calls;
- synergies with structural funds : ERA-chairs like, twinning and teaming

National Progress towards realization of ERA


ERA priority 2: Optimal transnational co-operation and competition

Major investment in RI

International partnerships schemes


Contribution to international organizations

Contribution to different European schemes –public – public partnerships /public- private partnerships



ERA priority 2: Optimal transnational co-operation and competition

- **Major investment in RI:**
- Extreme Light Infrastructure – Nuclear Physics (ELI-NP), pan-European infrastructure which will be built in Romania/Magurele Science Park
- The Danube International Centre for Advanced Studies for River-Delta-Sea Systems (Danubius-RI, www.danubius-ri.eu).



ERA priority 2: Optimal transnational co-operation and competition

- **International partnerships schemes** (Swiss-RO, RO-FR, SEE financial mechanism, bilateral cooperation etc.)
- **Romania contributes to 16 international organizations:** International Centre for Genetic Engineering and Biotechnology (ICGEB, Trieste), International Seismological Centre (Newbury, UK), European Physical Society (Geneva), International Centre for S&T Information (Moscow), EUREKA, ESF (Strasbourg), COST, TERENA (Amsterdam), CEENET (Austria), EUROGEOSURVEYS, European Space Agency (ESA), ITER, GSI-FAIR GmbH, CERN, Unified Centre for Nuclear Research (Dubna). The contribution amounts to €25m per year, the largest contribution being to ESA (€16m) and CERN (€6m).



RO strategy for participation in P2Ps

- Previous very good scientific results ERA NET /ERA NET PLUS (FP7), art 185: ENM II, AAL, EUROSTARS
- Bottom up-approach (based on requests coming from scientific community, justified by scientific results)
- ERA NET COFUND –JPI – high priority
- ERA NET COFUND – according with RO Strategy for RTDI and RO potential

RO participation in P2Ps

- ERA NET /ERA NET PLUS (FP7)
- ERA NET COFUND –JPI
- ERA NET COFUND
- JPIs
- Article 185 – AAL/AAL2, EUROSTARS
- RO participates in 80 networks !

Best results in ERA NETs

HIVERA (FP7) -shows great RO potential in infectious diseases !

- Each call – 1 RO proposal selected for funding : fundamental and clinical research
- Last call: 2 RO projects: **Colentina Hospital 1st RO coordinator in HIVERA .**

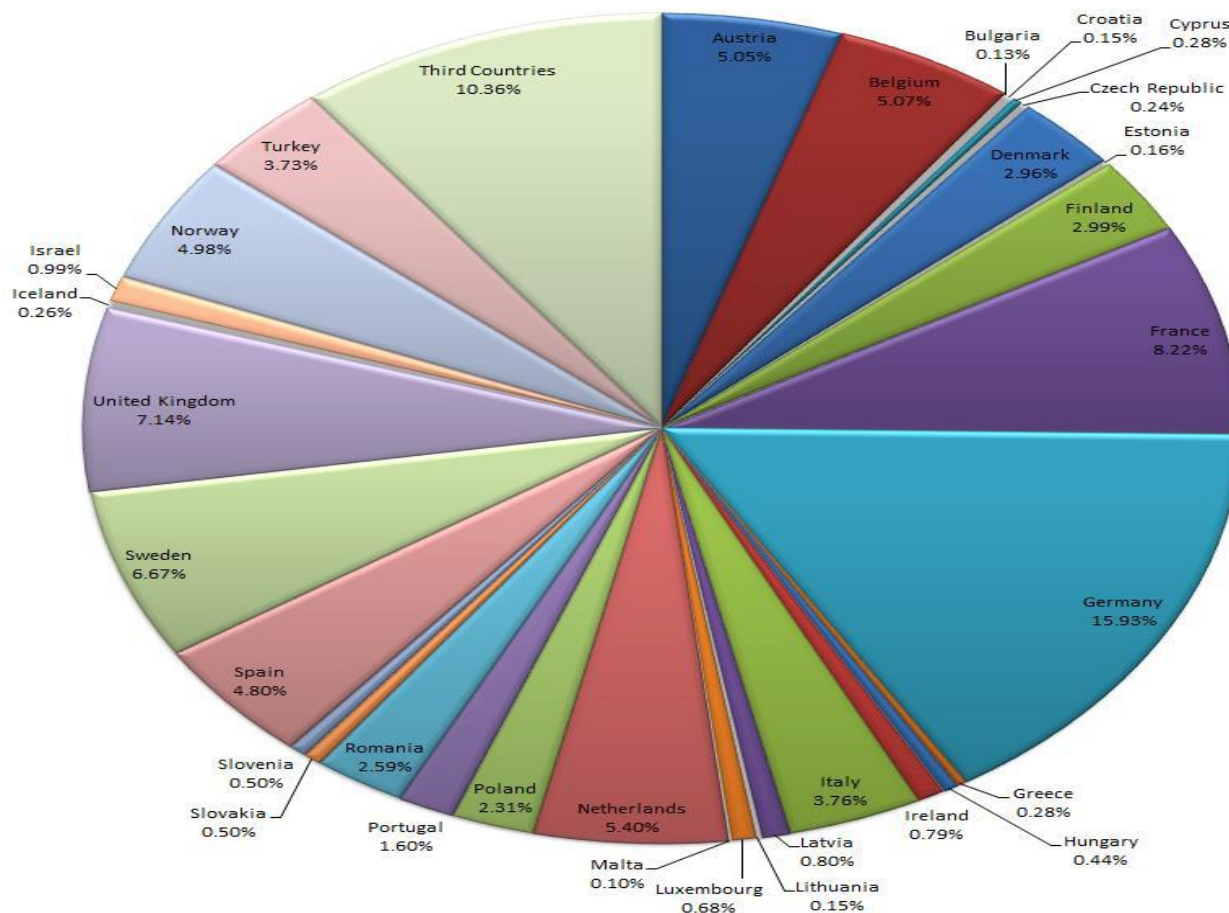
HIVERA shows:

- Very good involvement of scientific community and medical staff in each call (last call :6/8 applications with RO partners!)
- Training the applicants (2 days training courses for medical staff) how to write a proposal under ERA NET scheme – most of them applied for calls
- RO is well organized in HIV management (regional centers) and this made the dissemination of the calls successful)



Country involvement in joint calls January 2014- June 2015

- RO -1st investor from NMS (2.59% , followed by PL -2.31%) but comparable with FI 02.89%.
- The real budget of the funded projects may vary due to different reasons: success rate, different allocation of the RO funds etc.
- ERA NET COFUND – JPI
- ERA NET COFUND
- ERA NET



ANNUAL JOINT PROGRAMMING CONFERENCE 14-15TH
 January 2016

RO investment in ERA NET COFUND networks submitted in 2015 – call closure 2016

- ACT
- ERA4CS(JPI Climate)
- ENSUF (JPI Urban)
- ERA-CVD
- ERA-HLDL (JPI-HLDL)
- ERA-PLANET
- JPI ECAMR (only for cofunded call)
- M-ERA NET2
- NEURON III
- Waterworks 2015 (JPI FACCE, JPI Water)

60% of the COFUNDS networks!



RO participation at ERA NETs/ COFUND/ERA NET PLUS

- RO budget per project: high variability -150 000-500 000 EUR
- Success rate : variable, depending on international connections. Serious cuts of national research budget (2012-2015) affected largely RO success rates in ERA NETs!
- ERA NET networks are not always with traditional RO partners and is a serious need to have partnerships events for facilitating the consortia!
- Most frequent partner: DE, FR.

RO participation in JPIs

- RO is member in MB of JPIs (7/10)
- RO is involved in ERA NET COFUND of JPIs(without being member in MB) : JPI Urban , JPI Climate
- RO is involved in CSA supporting JPIs (ex. JPI AMR –in charge with Stakeholders policy and activities)
- RO is involved in calls launched outside of JPI (only for JPI HLDL and JPI FACCE)
- RO is not involved at all in JPI More years better life (due to the coverage of the topic through other mechanisms)



RO support to JPIs (ANCSI)

- Travel costs supported for JPI MB members
- Research projects funded through national programme (not with structural funds)
- Creation of a dedicated programme for JPI support under NPRDI IIII (funds exclusively RDI projects and support actions) – starts in 2016
- Creation of a dedicated scheme for funding improving participation at JPIs (under NPRD III – International cooperation programme) –starts in 2016

Implementation of Art.185

- AAL/AAL2
- EUROSTARS/EUROSTARS 2

RO results in AAL –towards AAL2

- 2012-2014 – 1 mil EUR/year – all budget spent
- Very good participation of SMEs: 6 SMEs in 5 projects funded by RO in 2014
- TeamNEtWorld Professional Services SRL 2 projects /5 RO funded projects in 2014
- Very good participation of NGOs: Fundatia Ana Aslan International (2 projects /5 RO funded projects in 2014



RO results in EUROSTARS

- Very encouraging participation of RO SMES !
- Since 2008– 22 projects funded - 1 mil EUR/ year
- 2014 – 3 projects selected (out of 31 submitted with RO partners) .
- 2015- 5 projects selected (1 SME: 530 000 EUR for 3 years)
- Areas: agriculture, IT, cyber-security, medicine (AMR)

Conclusions

- Performance of National Research and Innovation System in P2Ps is **very good** if we take into account that Romania has four times fewer researchers per population, a five times smaller GERD and 19 times smaller R&D expenditures in euro per capita compared to the EU average!
- In P2Ps, **RO shows a strong involvement and dedication:**
 - participation in the majority of COFUNDS (60% of networks)
 - participation in 9/10 JPIs
 - participation in implementation of Art.185 (AAL, EUROSTARS)

Bibliography

-
- European Commission (2015), Country Report Romania 2015. Including an In-Depth Review on the prevention and correction of macroeconomic imbalances, Brussels, 26.2.2015, http://ec.europa.eu/europe2020/pdf/csr2015/cr2015_romania_en.pdf.
- European Commission (2014), Innovation Union Competitiveness Report 2013.
- European Commission (2014b), Innovation Union Scoreboard 2014.
- European Commission (2014c), 424 final, COUNCIL RECOMMENDATION on Romania's 2014 national reform programme and delivering a Council opinion on Romania's 2014 convergence programme, http://ec.europa.eu/europe2020/pdf/csr2014/csr2014_romania_en.pdf.
- ERA-LEARN 2020 Annual report on P2Ppartnerships (2015)

THANK YOU !

Mrs. Ioana ISPAS

GPC delegate

Head of National Research Programme –Support to
JPIs

National Authority for Scientific Research and Innovation

21-25, Mendeleev str., 010368 Bucharest 1, Romania

Tel/fax: (+ 4) 0 21 321277 91

email: ioana.ispas@ancs.ro