



Small country in vast P2P partnerships landscape



Annual Joint Programming Conference 2016:
Building and Sustaining Commitment to Public-Public
Partnerships
Brussels, 14 January 2016

PETRA ŽAGAR

Republic of Slovenia

Ministry of Education, Science and Sport (MIZŠ)



Overview

- Fast facts
- Research landscape
- Governance of research system
- International cooperation
- Public-public partnerships
 - participation
 - commitment
 - opportunities
 - barriers
- Conclusions



Fast Facts

Location: South Central EU/Eastern EU

Population: 2.055.000

Area: 20.273 km² of which 122 km² water

Land boundaries: 1.211 km
(Austria, Hungary, Croatia, Italy)

Coastline: 46,6 km

Highest peak: 2864 m, Triglav

Capital: Ljubljana,
with 280.000 inhabitants

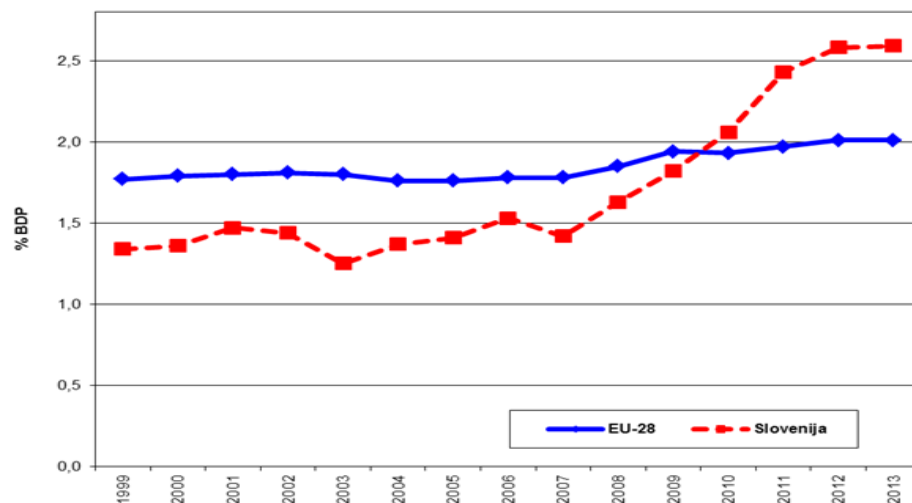
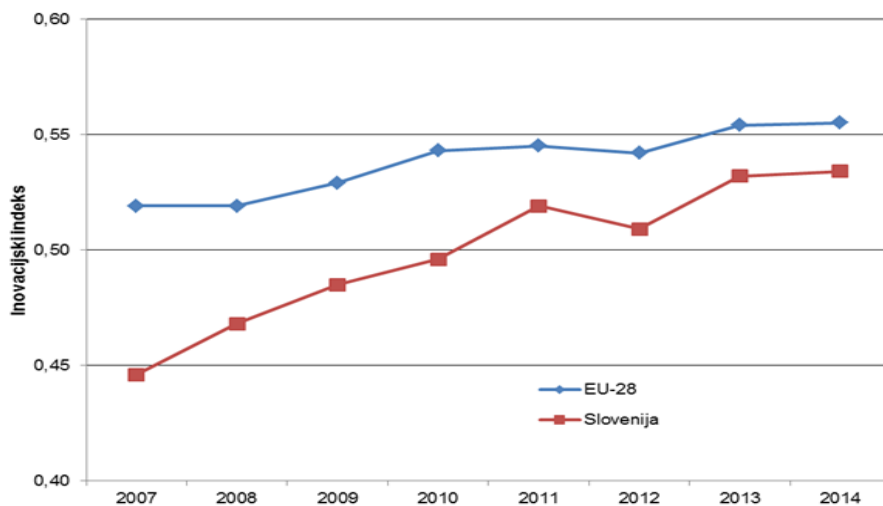


ERA // Ljubljana process



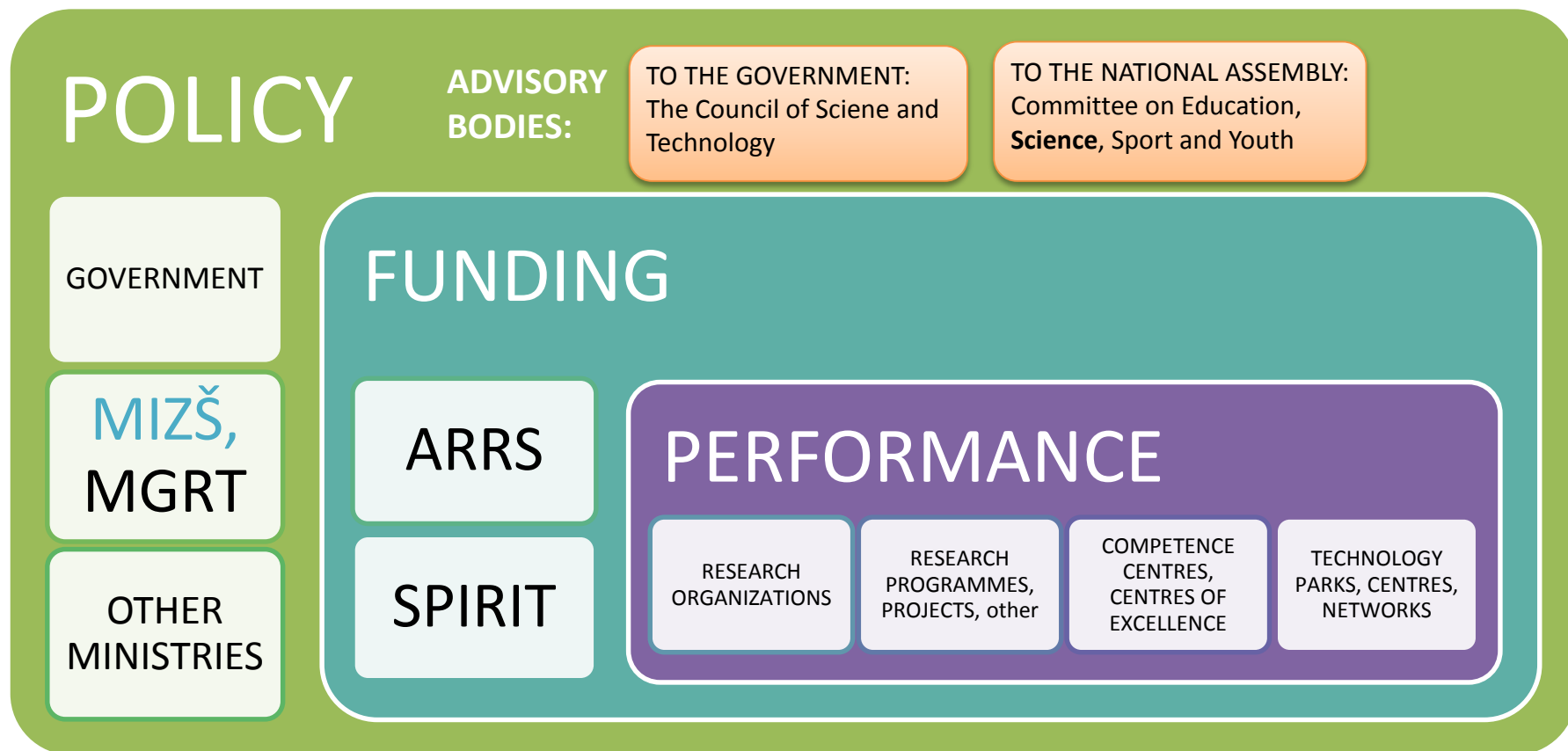
Research Landscape

- 4 Universities
- 15 National Research Institutes
- 12.111 of researchers in R&D (year 2013) of which
- 5.619 in private sector (year 2013)
- 1.015 research organizations (including R&D units in business companies)





Governance of research system





International cooperation

- Art.185
- CIP (Poly4Eml)
- COSME
- COST
- ETPs
- EUREKA
- HORIZON 2020 (ERA-NET Co-fund)
- JPIs
- JTIs (IMI2, BBI)
- Research infrastructures (ESFRI)

FP7

- Share of SI participation in the total participation is 0'8%
- Country received 0'4% of total EC contribution
- Relatively succesful as SI represents 0'4% inhabitants of EU



Public-public partnerships

ERA-NET
schemes

EJP



JPIs

Art. 185



Participation

- in H2020 WP 2016-2017 two pilot calls for EJP Co-fund action

SC1 The European Human Biomonitoring Initiative 	SC2 One Health (Zoonoses – emerging threats) 
<ul style="list-style-type: none">• High interest from SI research community (ARRS + 8 institutes/ agencies/ ministry's offices)	<ul style="list-style-type: none">• One of too many Co-fund actions under SC2• Ministry did not receive any initiative by the research community

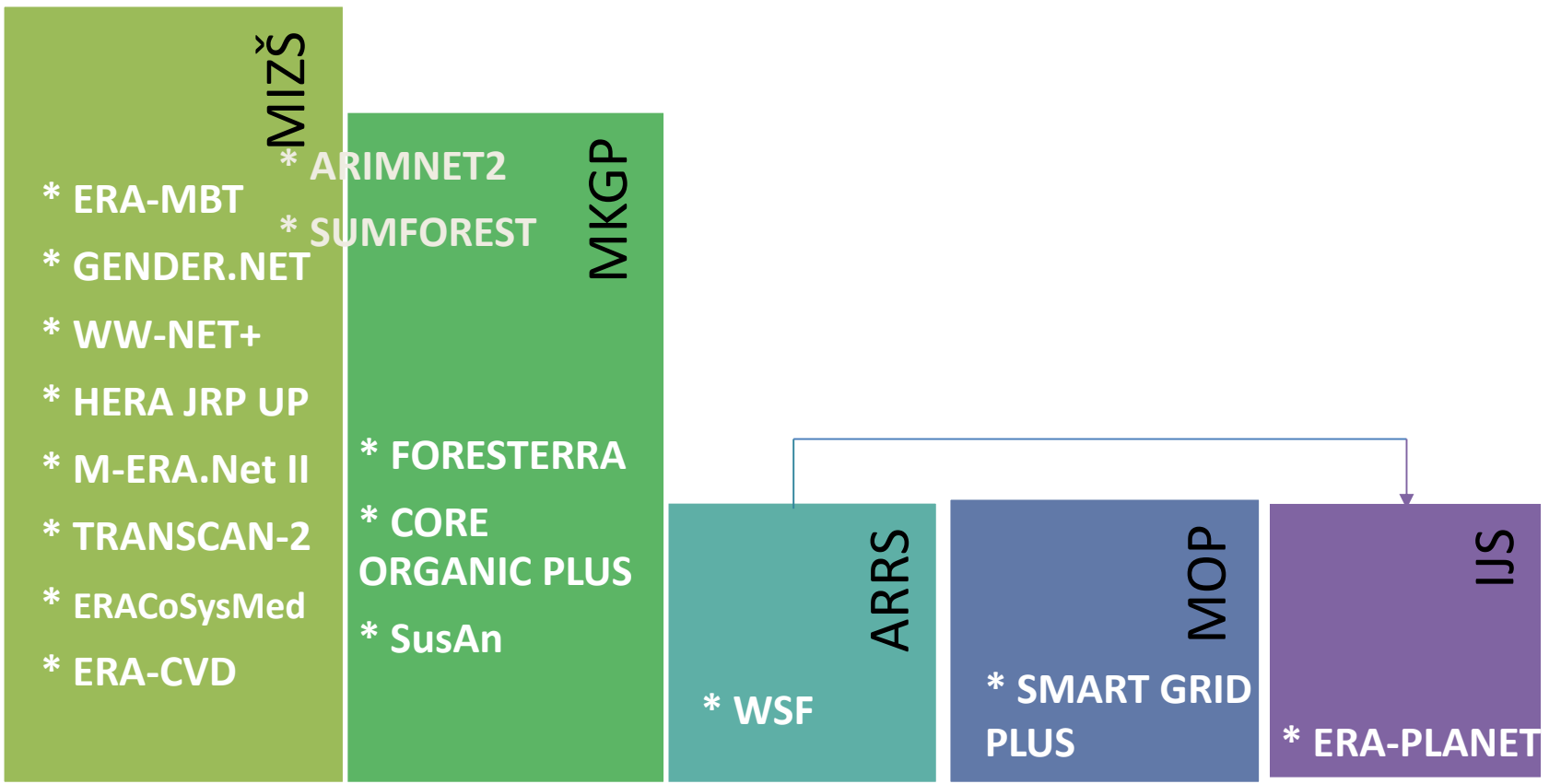
- Lot of fuss about *new* instrument; why?, what is the difference compared to JPIs, ERA-NETs?



ERA-NET schemes

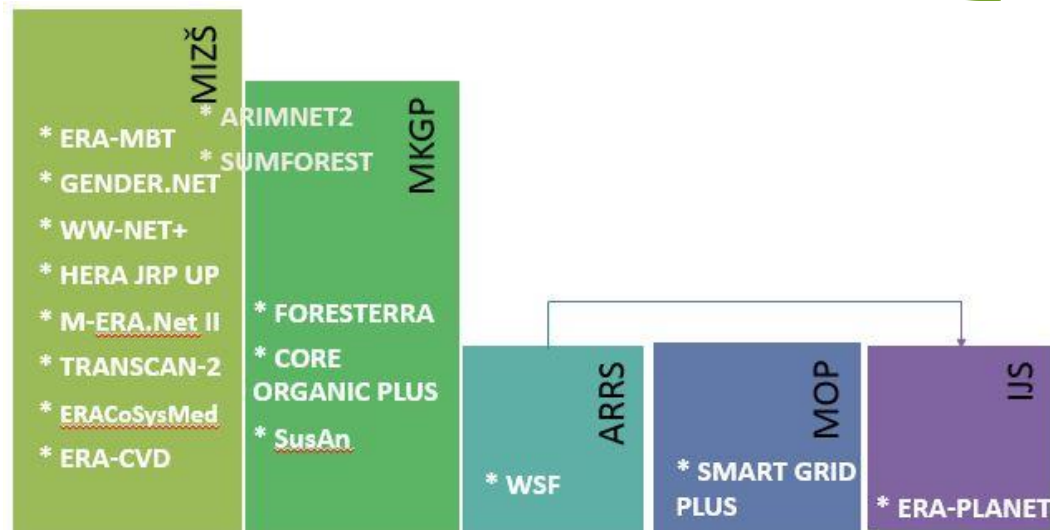
Participation

ACTIVE





ERA-NET schemes



THEMATIC CLUSTERING:

- ⑥ KBBE, food, agriculture, fisheries
- ③ health
- ② socio-economics sciences, humanities
- ② horizontal
- ① materials, nanotech
- ① energy
- ① environment



JPIs

Participation

JPND

CLIMATE

CULTURAL
HERITAGE

MORE YEARS,
BETTER LIVES

URBAN
EUROPE

HEALTHY DIET,
HEALTHY LIFE

OCEANS

FACCE

WATER

AMR



JPIs

Participation

MIZŠ

~~withdrawal~~

MDDSZ

ARRS

JPND

CLIMATE

~~CULTURAL
HERITAGE~~

MORE YEARS,
BETTER LIVES

URBAN
EUROPE

University?

HEALTHY DIET,
HEALTHY LIFE

OCEANS

FACCE

WATER

AMR



Participation – WHY?

ERA-NET schemes

EJP

JPIs

- positive experience from previous ERA-NETs (continuation)
- success of SI researchers in previous ERA-NET calls
- following national strategy
- critical mass of researchers in the thematic covered
- great interest from research community
- financing and transnational cooperation for research fields that is financially disadvantaged
- invitation from coordinators



Commitment – HOW MUCH and COSTS?

ERA-NET schemes

EJP

JPIs

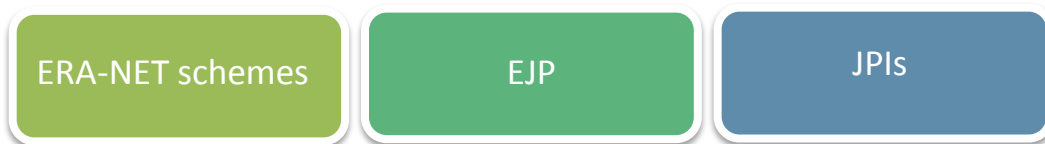
- Typical financial commitment 630.000,00 € for 3 years/ERA-NET: funding of 2-3 selected projects
- yearly for ERA-NETs: 1'5 M€

Success stories:

- **HERA JRP2**: financial contribution 75.384,00: funding 4 projects → financial recovery ~ 779.000,00 €
- **WOODWISDOM-NET**: 3rd call - funded 13 projects of which 6 with SI participation
- **WOODWISDOM-NET**: 4th call - funded 24 projects of which 7 with SI participation (14 partners → 6 from industry)

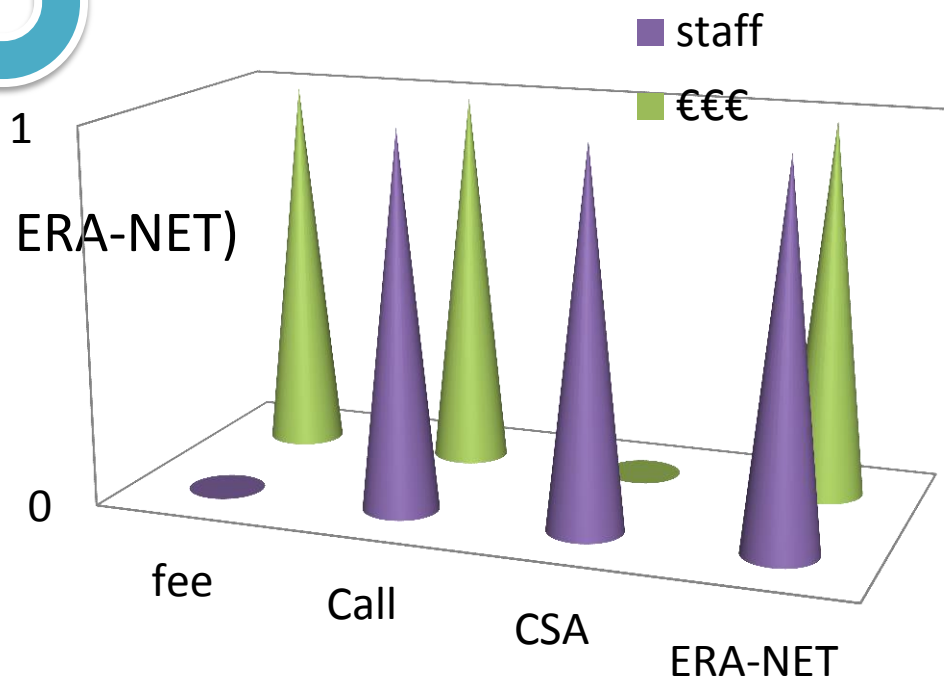


Commitment – HOW MUCH and COSTS?



• COSTS:

- Fee
- Call (independent call from ERA-NET)
- Involvement in CSA
- Funding of ERA-NET





Opportunities – WHY BOTHER?

ERA-NET schemes

EJP

JPIs

- increased transnational scientific and technological co-operation in Europe and beyond
- integration and visibility of SI science into the EU
- networking of national funding
- support the internacionalization of science
- enabling links with countries where the research policy and international integration are more developed



Barriers - CHALLENGES

ERA-NET schemes

EJP

JPIs

- National legislation is not adapted to transnational cooperation
- Challenge of Human resources at the Ministry
- Assuring additional funds
- Increasing synergies between Ministries/Agencies
- No existing targeted national programmes



Art. 185

Participation

MIZŠ
(AAL)

AAL2

MGRT/MIRS
+ MIZŠ
(EMRP)

EMPIR

MGRT
(EUROSTARS)

EUROSTARS2



Participation – WHY?

- **AAL:** importance of area of aging population and the link to applied research and innovation that are ICT-based
- AAL2: continuation
- **EMRP:** – it promised coordination and integration of metrology research programmes, continuation of ERA-NET iMERA-PLUS
 - highly consolidated research community
 - 9 carriers of national and reference measurement standards
- EMPIR: continuation
- **EUROSTARS:** it promised to provide a quick way to research funding for innovative SMEs
- EUROSTARS-2: continuation



Commitment – HOW MUCH?

- **AAL2:** 200 k€ / year
- **EMPIR:** 3 M €
- **EUROSTARS-2:** 600 k€ / year



Opportunities – WHY BOTHER?

- **AAL2**
 - SI could not sufficiently achieve results of the project proposals alone, whereas the specific knowledge and excellence required for ICT–based research and development of products and services for aging are spreaded across national borders
- **EMPIR**
 - great opportunity for financing research in the field of metrology as it was financially undernourished (demands and needs of industry are pretty big)
- **EUROSTARS-2**
 - Stimulating market-oriented innovation in any technological fields
 - Supports "bottom-up" research



Barriers - CHALLENGES

- **AAL2**
 - Unable to cofinance all projects with SI participants that are positive on the ranking list
- **EMPIR**
 - Limitation of EC contribution to max 5% of overhead
 - Division of tasks between 2 Ministries: MIZŠ + Metrology Institute, under responsibility of MGRT
- **EUROSTARS-2**
 - The central government budget is adopted for two years ahead and in addition revised every year
 - Not all A.185 initiatives are equally treated (% of top-up)



Mapping

	ERA-NETs	EJP	JPI	EMPIR	AAL2	E*2
Kbbe, food, agriculture, fisheries	●●●●●●					●
Health	☑●●	●	●●●		●	●
Socio-economic Sciences, Humanics	●●					
Materials, Nanotevhology	●					●
Energy	●					●
Horizontal	●●					
Environmental topics	●		●			●
ICT					●	●
Industrial production						●
Security						●
Transport			●			●
Infrastructure			●			●



REPUBLIKA SLOVENIJA
MINISTRSTVO ZA IZOBRAŽEVANJE,
ZNANOST IN ŠPORT

I FEEL
SLOVENIA

Overall Conclusions





Final Conclusions

- ERA-NET Schemes are most suitable mechanisms for small country, for achieving breakthrough of research and researchers
- Support ECs *synergy-enabling* rules between ESIF and H2020
- Influential decision makers need to see the added value of each P2P partnership and alignment
- Significant policy to encourage transnational activities should be promoted



Thank you for your attention!

Comments? / Questions?

PETRA ŽAGAR
petra.zagar@gov.si